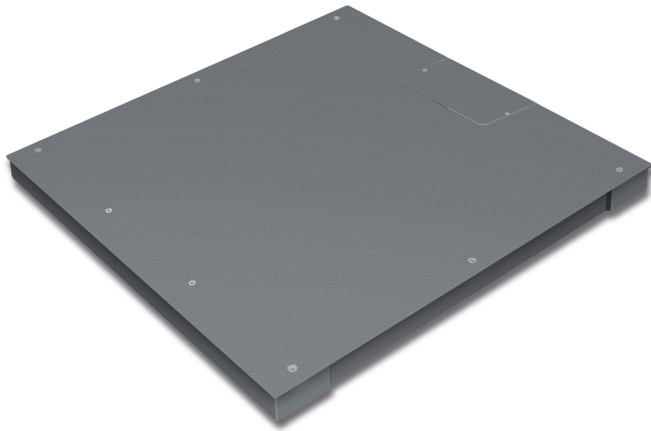


# KERN KFP 3000V20NM

# KERN

Weighing bridge made from steel, also with weighing plate screwed on from the top



## Functions

|                           |      |
|---------------------------|------|
| IP protection - load cell | IP67 |
|---------------------------|------|

## Environmental conditions

|                           |        |
|---------------------------|--------|
| Ambient temperature [Min] | -10 °C |
| Ambient temperature [Max] | 40 °C  |

## Packing & Shipping

|                              |                  |
|------------------------------|------------------|
| Readability force [d] (N)    | 2 d              |
| Dimensions packaging (W×D×H) | 1550×1300×260 mm |
| Net weight                   | 135 kg           |
| Shipping method              | Freight          |
| Net weight approx.           | 135 kg           |
| Gross weight approx.         | 190 kg           |
| Shipping weight              | 188 kg           |

## Services (optional)

|  |         |
|--|---------|
| Article number for conformity assessment | 965-232 |
| Article number for DAkkS calibration     | 963-132 |

## Pictograms

### STANDARD



### FACTORY



## Category

|                  |                 |
|------------------|-----------------|
| Brand            | KERN            |
| Product category | Component       |
| Product group    | Weighing bridge |
| Product family   | KFP-V20-IP67    |

## Measuring System

|                         |                   |
|-------------------------|-------------------|
| Weighing capacity [Max] | 3000 kg           |
| Readability [d]         | 1 kg              |
| Minimum weight [Min]    | 20 kg             |
| Loadcell type           | ZEMIC H8C 1.5 ton |
| Load cell connection    | 6-wire            |

## Approval

|   |      |
|---|------|
| Accuracy classe                         | III  |
| Verification scale interval [e]         | 1 kg |
| Conformity assessment possible ex works | ✓    |

## Construction

|   |                      |
|---|----------------------|
| Dimensions weighing platform (W×D×H)      | 1500×1250×90 mm      |
| Material weighing plate                   | steel, powder-coated |
| Material platform                         | steel, powder-coated |
| Dimensions weighing surface (W×D)         | 1500×1250 mm         |
| Cable length                              | 5 m                  |
| Allowed cable length display device [Max] | 20 m                 |
| Material load cell(s)                     | alloyed steel        |
| Load cells - number                       | 4                    |
| Levelling feet adjustable                 | ✓                    |